

DOT surfaces

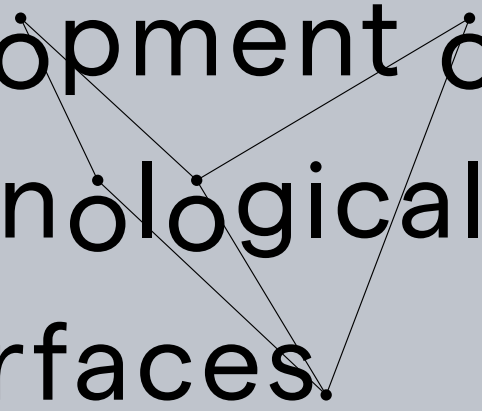
The logo features the word "DOT" in a large, bold, white sans-serif font. To the right of "DOT" is a smaller white dot, which is the center of five thin white lines radiating outwards in various directions. The word "surfaces" is written in a smaller, white sans-serif font to the right of the central dot.

CORIAN[®]
DESIGN

The logo consists of the word "CORIAN" in a bold, red, sans-serif font, with a registered trademark symbol (®) to its upper right. Below it, the word "DESIGN" is written in a smaller, white, sans-serif font. Two horizontal red brackets are positioned above and below the text, framing it.

Corian® Design word mark and the Corian® Design logo are trademarks of affiliates of DuPont de Nemours, Inc. used under license by DOT Surfaces.
For questions or concerns contact: info@dotsurfaces.com C/ Moroder 3 - 46113 Moncada (Valencia) - Spain - Quality Department (+34 961 860 930).
Manufactured and distributed by DOT Surfaces, a licensee of the Corian® Design trademark. DOT Surfaces assumes liability for the manufacture of this product.

Development of
technological
surfaces.



**DOT surfaces®,
the benchmark
in solid surface
transformation.**

After more than 15 years of experience in the engineering and manufacturing of Corian® to the highest quality standards, we began the process of industrializing our processes with the aim of providing a solution to our glo Corian® Design word mark and the Corian® Design logo are trademarks of affiliates of DuPont de Nemours, Inc. used under license by DOT Surfaces. For questions or concerns contact: info@dotsurfaces.com C/ Moroder 3 - 46113 Moncada (Valencia) - Spain - Quality Department (+34 961 860 930). Manufactured and distributed by DOT Surfaces, a licensee of the Corian® Design trademark. DOT Surfaces assumes liability for the manufacture of this product. bal clients' project needs, in 2019. Being a holding company has enabled us to access more market sectors without losing control of the entire life cycle of our products.

With the incorporation of a new acrylic material, our production capacity and a proactive team committed to innovation, we reached an agreement to work under the Corian® Design license to position ourselves as the benchmark in the transformation of solid surfaces.



09 KĀBU COLLECTION
15 KĀBU BATHTUB COLLECTION

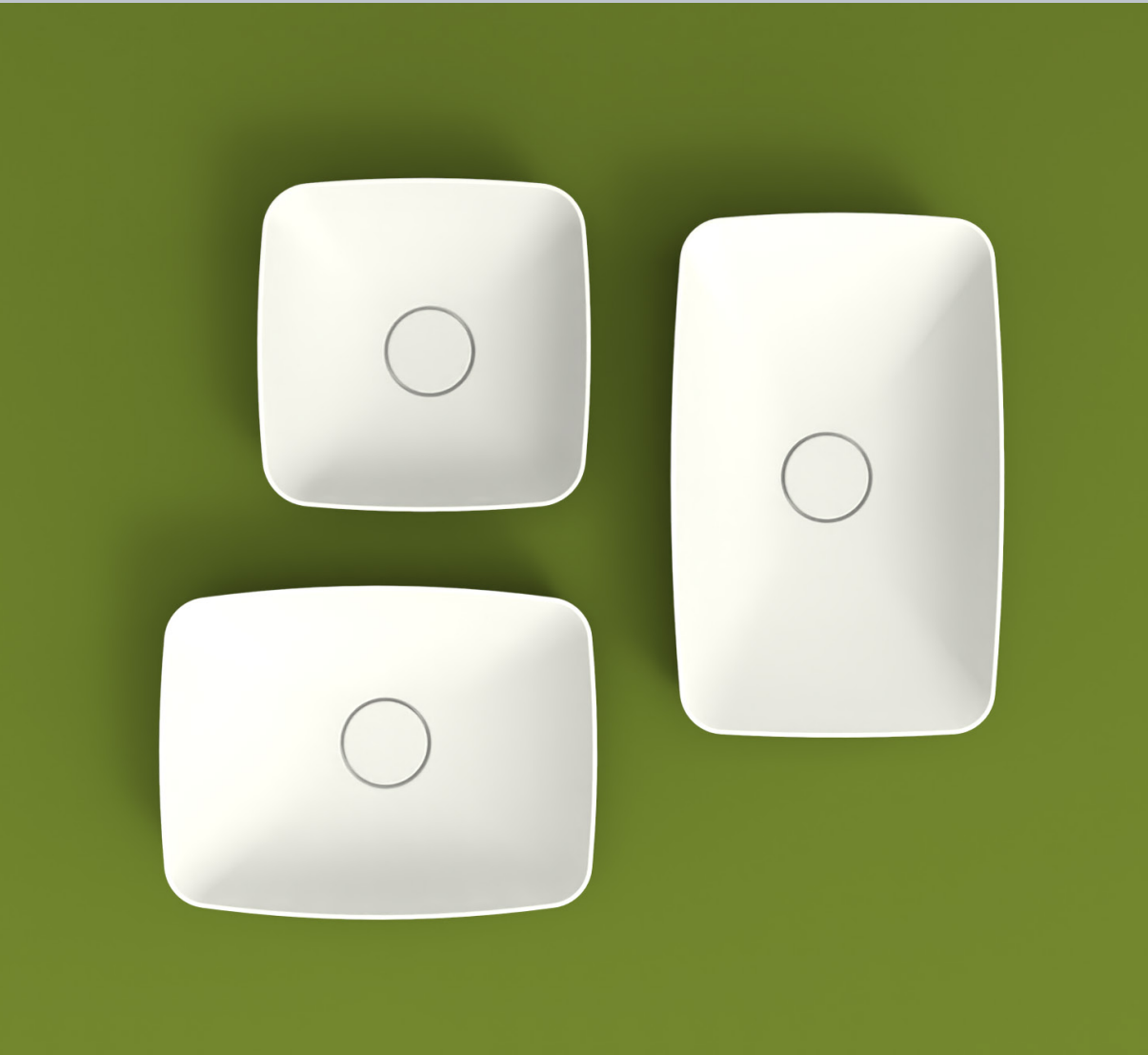


KĀBU COLLECTION
TOP MOUNT

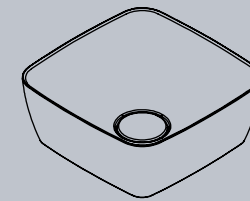
Kābu is our collection of injected Corian® countertop washbasins which offer functionality, optimal hygiene maintenance and availability in a variety of different sizes. The collection's timeless aesthetic appeal and its Glacier White finishes allow for seamless integration into and adaptability to any type of project.

The clean lines of the designs together with the texture that's silky to the touch, the high quality and the versatile properties of Corian®, which enable endless design flexibility, help us to create luxurious, comfortable bathrooms with the well-being of the user as the focal point.

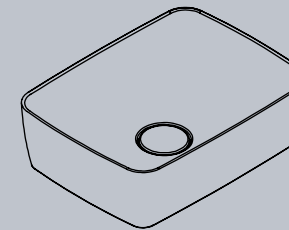




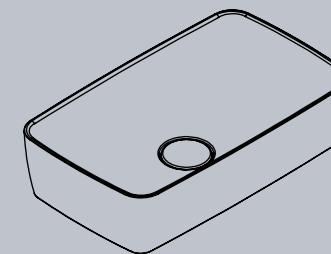
KĀBU COLLECTION



1001
380x380x150mm



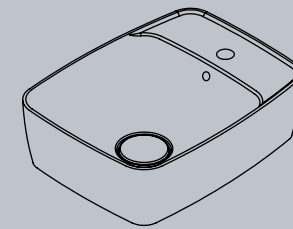
1002
500x380x150mm



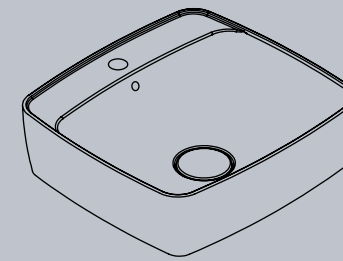
1003
600x380x150mm



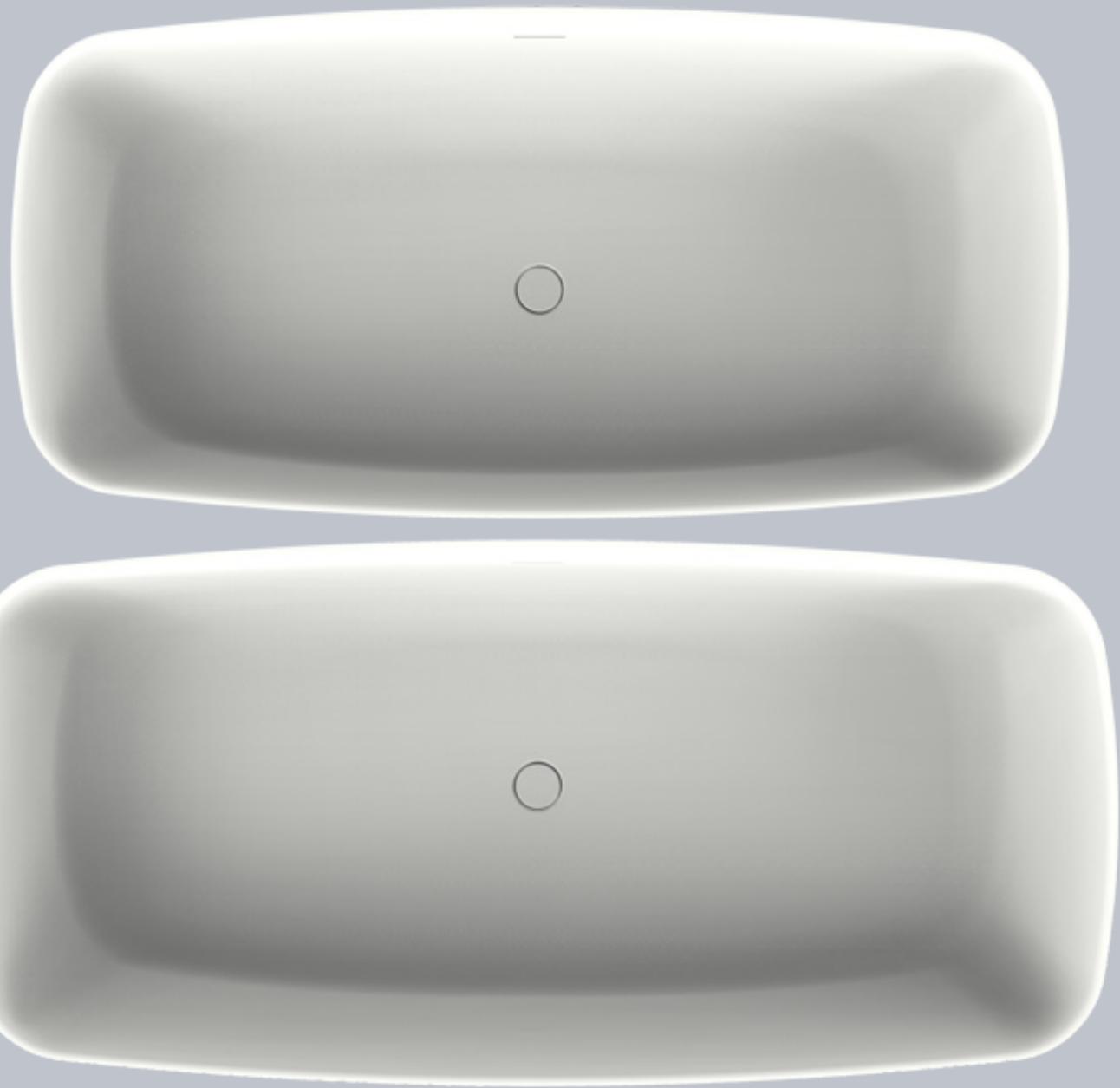
KĀBU COLLECTION



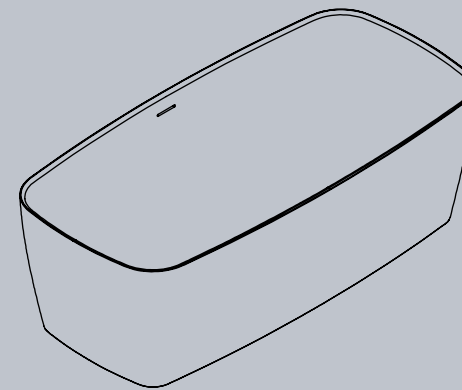
1004
500x380x150mm



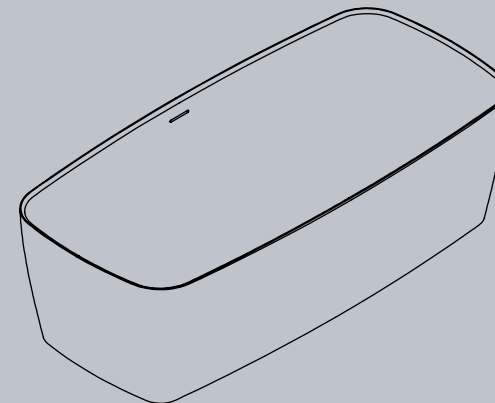
1005
500x460x150mm



KĀBU BATHTUB COLLECTION



1011
1550x750x500mm



1012
1700x800x500mm

DOT. surfaces

www.dotsurfaces.com

info@dotsurfaces.com
+34 961 860 930

C/ Moroder, 3 Pol. 3
46113 Moncada
Valencia - SPAIN



Corian® Design word mark and the Corian® Design logo are trademarks of affiliates of DuPont de Nemours, Inc. used under license by DOT Surfaces.
For questions or concerns contact: info@dotsurfaces.com C/ Moroder 3 - 46113 Moncada (Valencia) - Spain - Quality Department (+34 961 860 930).
Manufactured and distributed by DOT Surfaces, a licensee of the Corian® Design trademark. DOT Surfaces assumes liability for the manufacture of this product.