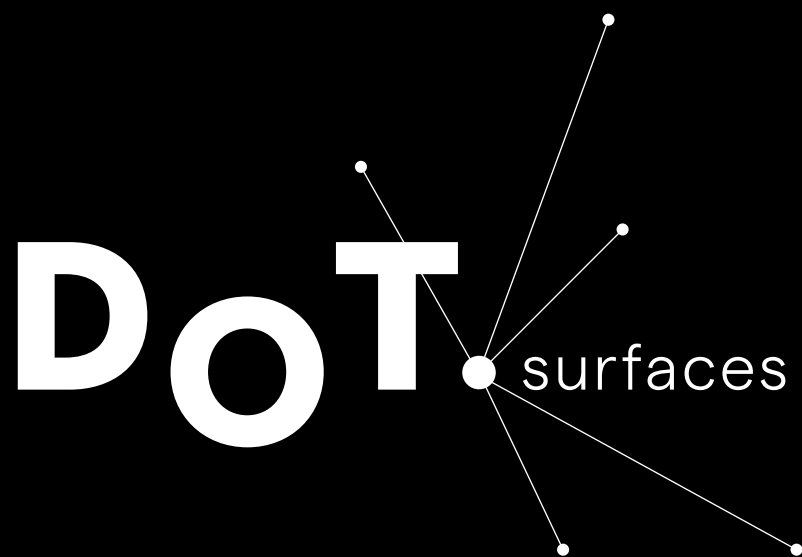


DOT surfaces

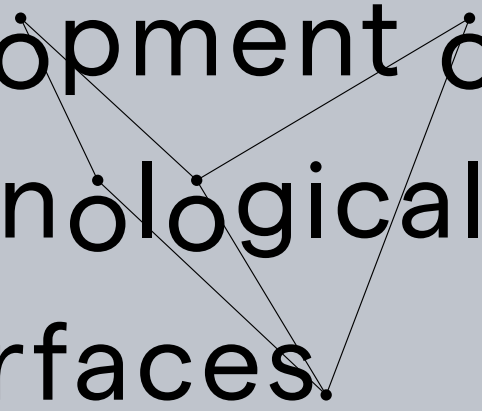
The logo features the word "DOT" in a large, bold, white sans-serif font. To the right of "DOT" is a smaller white dot, which is the center of five thin white lines radiating outwards in various directions. The word "surfaces" is written in a smaller, white sans-serif font to the right of the central dot.

CORIAN[®]
DESIGN

The logo consists of the word "CORIAN" in a bold, red, sans-serif font, with a registered trademark symbol (®) to its upper right. Below it, the word "DESIGN" is written in a smaller, white, sans-serif font. Two horizontal red brackets are positioned above and below the text, framing it.

Corian® Design word mark and the Corian® Design logo are trademarks of affiliates of DuPont de Nemours, Inc. used under license by DOT Surfaces.
For questions or concerns contact: info@dotsurfaces.com C/ Moroder 3 - 46113 Moncada (Valencia) - Spain - Quality Department (+34 961 860 930).
Manufactured and distributed by DOT Surfaces, a licensee of the Corian® Design trademark. DOT Surfaces assumes liability for the manufacture of this product.

Development of
technological
surfaces.



**DOT surfaces®,
the benchmark
in solid surface
transformation.**

After more than 15 years of experience in the engineering and manufacturing of Corian® to the highest quality standards, we began the process of industrializing our processes with the aim of providing a solution to our glo Corian® Design word mark and the Corian® Design logo are trademarks of affiliates of DuPont de Nemours, Inc. used under license by DOT Surfaces. For questions or concerns contact: info@dotsurfaces.com C/ Moroder 3 - 46113 Moncada (Valencia) - Spain - Quality Department (+34 961 860 930). Manufactured and distributed by DOT Surfaces, a licensee of the Corian® Design trademark. DOT Surfaces assumes liability for the manufacture of this product. bal clients' project needs, in 2019. Being a holding company has enabled us to access more market sectors without losing control of the entire life cycle of our products.

With the incorporation of a new acrylic material, our production capacity and a proactive team committed to innovation, we reached an agreement to work under the Corian® Design license to position ourselves as the benchmark in the transformation of solid surfaces.



09 MIZU COLLECTION
13 MIZU BATHTUB COLLECTION



MIZU COLLECTION
WALL MOUNT

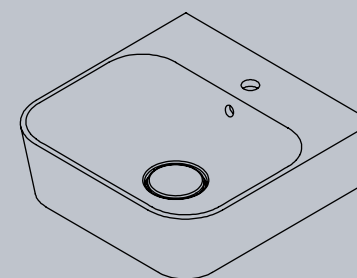
Made of injection-molded Corian®, these curved-shaped suspended washbasins have been designed to be placed in confined spaces but, more importantly, to improve accessibility and functionality in bathrooms for groups with reduced mobility.

This collection is a nod to the latest generation of washbasin design, they are projected from the wall and leaving the space underneath free, so necessary for furniture, shelves and/or accessories in reduced spaces.

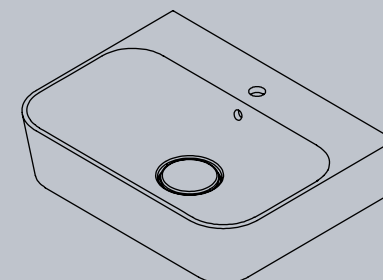




MIZU COLLECTION

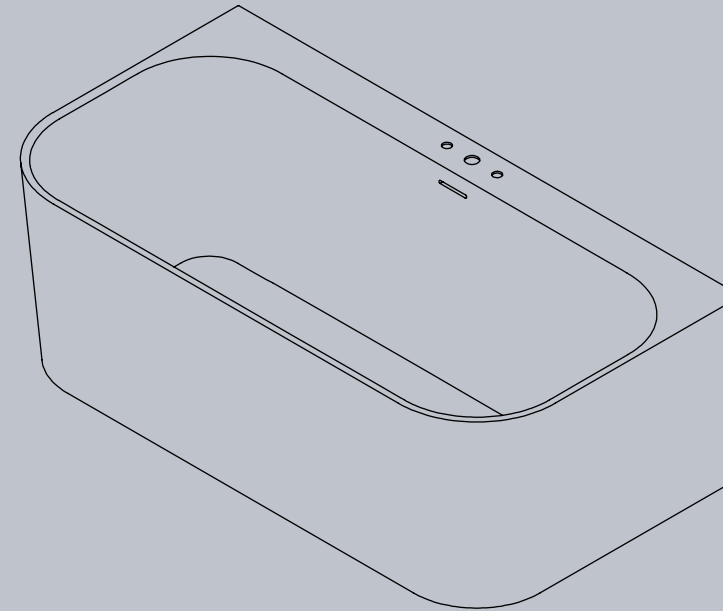


2001
500x500x160 mm



2002
650x500x160 mm

MIZU BATHTUB COLLECTION



2011
1700x860x500 mm

DoT.surfaces

www.dotsurfaces.com

info@dotsurfaces.com
+34 961 860 930

C/ Moroder, 3 Pol. 3
46113 Moncada
Valencia - SPAIN


CORIAN[®]
DESIGN
